

Mounting interfaces

- standards for hydraulic valve interfaces

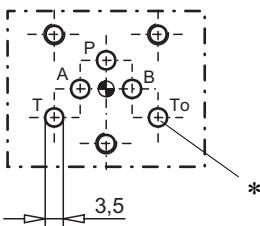


INFORMATION

There is considerable confusion over standards as applicable to the valve interfaces depicted below.

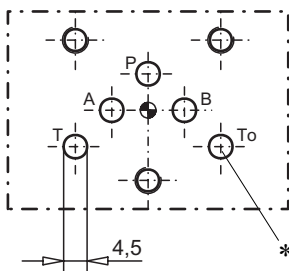
NG3-Mini

Wandfluh standard



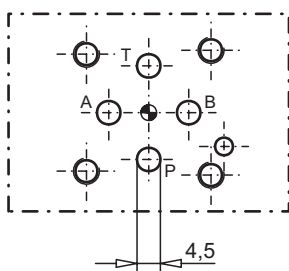
NG4-Mini

Wandfluh standard



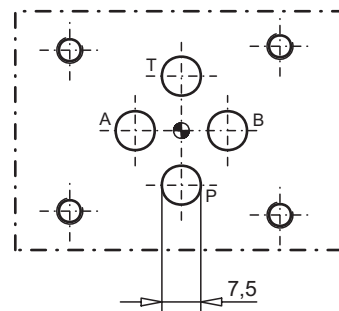
NG4

ISO 4401-02



NG6

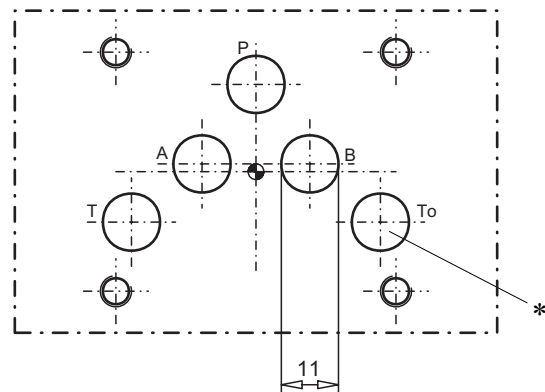
ISO 4401-03



Note:
Wandfluh delivers his products without center bore and center pin.

NG10

ISO 4401-05



*** Important:**

T₀ is not drilled in subplates NG3, NG4 and NG10, but T₀ is included in most of sandwich- and flange valves.